

2425/202
ANIMAL PRODUCTION II
June/July 2017
Time: 3 hours



THE KENYA NATIONAL EXAMINATIONS COUNCIL

**DIPLOMA IN AGRICULTURE
MODULE II**

ANIMAL PRODUCTION II

3 hours

INSTRUCTIONS TO CANDIDATES

*This paper consists of **EIGHT** questions.
Answer any **FIVE** questions in the answer booklet provided.
All questions carry equal marks.
Maximum marks for each part of a question are indicated.
Candidates should answer the questions in English.*

This paper consists of 4 printed pages.

**Candidates should check the question paper to ascertain that
all the pages are printed as indicated and that no questions are missing.**

1. (a) Give the housing requirement for draught animals. (5 marks)
- (b) Describe work-oxen with respect to:
 - (i) selection criteria;
 - (ii) training procedure. (15 marks)

2. (a) Outline the weaning procedure of piglets. (5 marks)
- (b) Describe the commercial feed requirement of sows/gilts. (5 marks)
- (c) Explain any five factors that influence the location of a piggery unit. (10 marks)

3. Figure 1 shows a graphical representation of the various phases in layers production cycle.

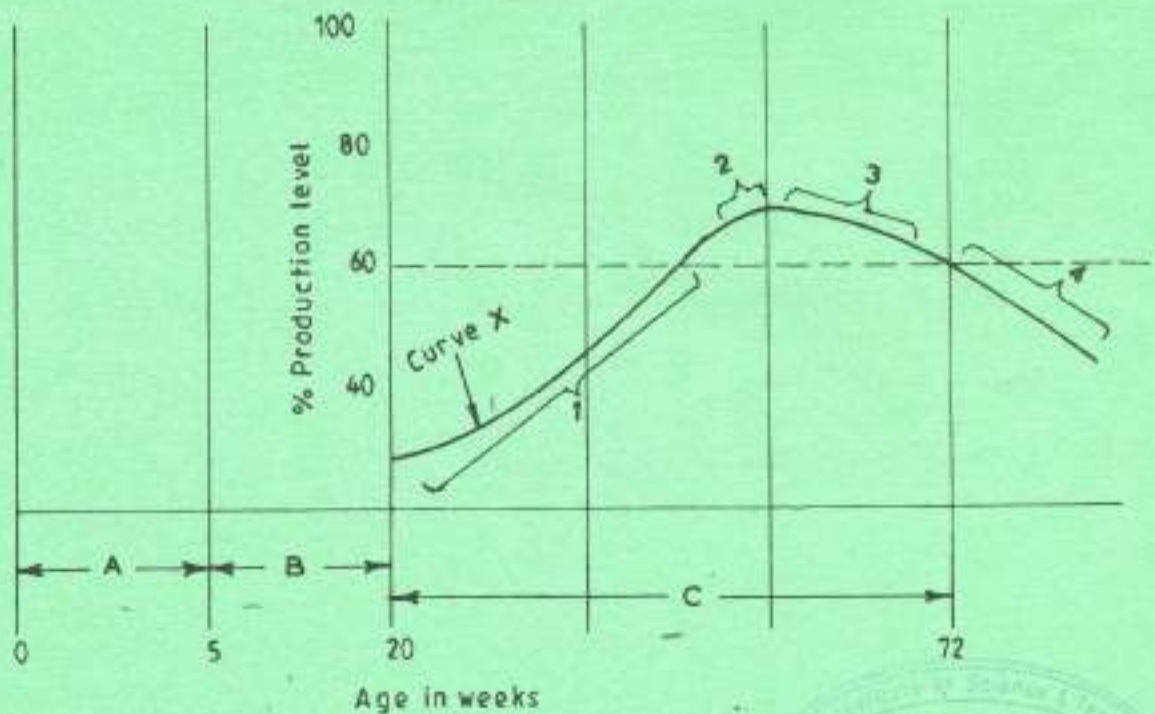


Fig. 1

- (a) Identify:
 - (i) the phases labelled A, B and C;
 - (ii) the curve labelled X;
 - (iii) the stages labelled 1, 2, 3 and 4;
 - (iv) the stage at which the flock should be considered to have a salvage value and the action an entrepreneur should take at this stage. (12 marks)
- (b) State any four factors that affect the shell thickness and egg size. (2 marks)
- (c) Give any six measures that should be taken to prevent egg eating in layers. (6 marks)

4. (a) Describe fish pond conditioning. (4 marks)
- (b) Explain the importance of the following checks prior to stocking a fish pond:
- (i) temperature; - should be
 - (ii) water hardness;
 - (iii) oxygen concentration;
 - (iv) turbidity;
 - (v) pH. (10 marks)

(c) Explain any **three** daily routine management practices in a fish pond. (6 marks)

5. (a) Describe the life cycle of a three host tick. (8 marks)
- (b) Highlight the measures that may be taken to control the build up of internal parasites in grazing animals. (6 marks)
- (c) Give any **six** signs of parasitic infestations in farm animals. (6 marks)

6. (a) Classify camels according to the purpose for which they are kept. (4 marks)

(b) Saddleback, Pakistan, Corriedale, Hampshire down, Turkana, Simmental, Somali, New Zealand white, Gabra/Rendille and Charolais are livestock breeds. Identify **four** camel breeds from the list. (2 marks)

(c) Describe any **five** anatomical adaptations of camels. (10 marks)

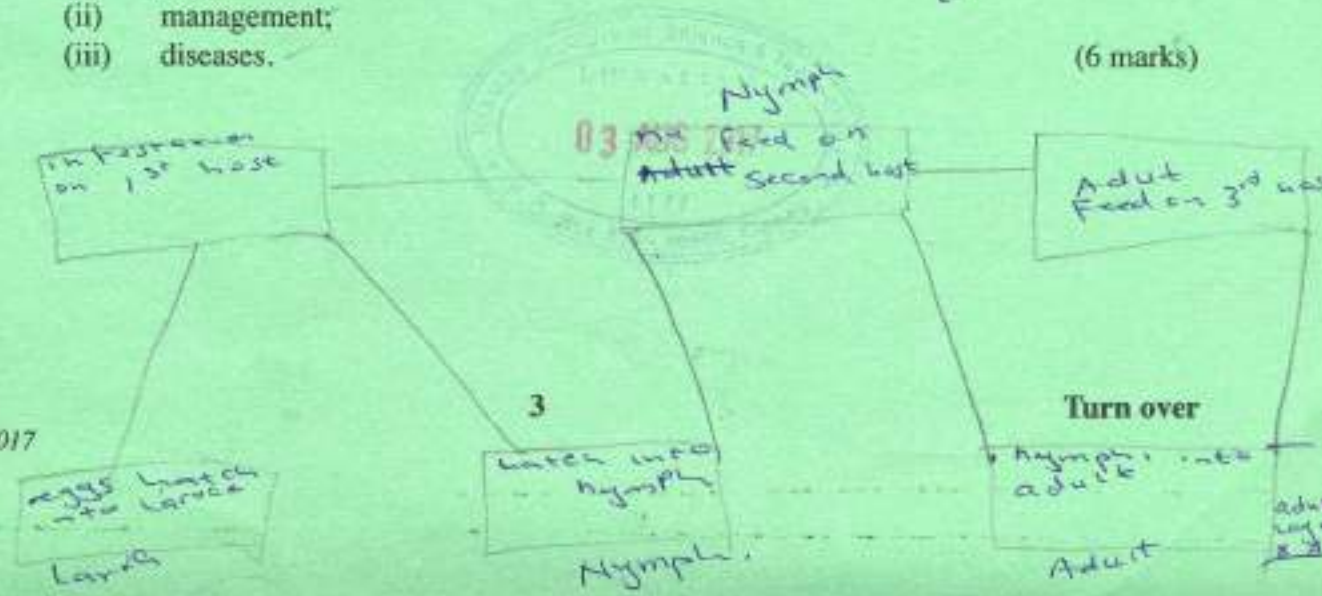
(d) State any **four** factors that lead to prolonged calving interval in camels. (4 marks)

7. (a) For each of the following poultry types, identify any **four** factors that should be considered in breeding and selection:

- (i) egg production; - size of the egg
- (ii) table bird. (4 marks)

(b) Explain how the following influence the quantity and quality of eggs:

- (i) feed;
- (ii) management;
- (iii) diseases. (6 marks)



(c) (i) Figure 2 shows the behaviour of chicks in a brooder.

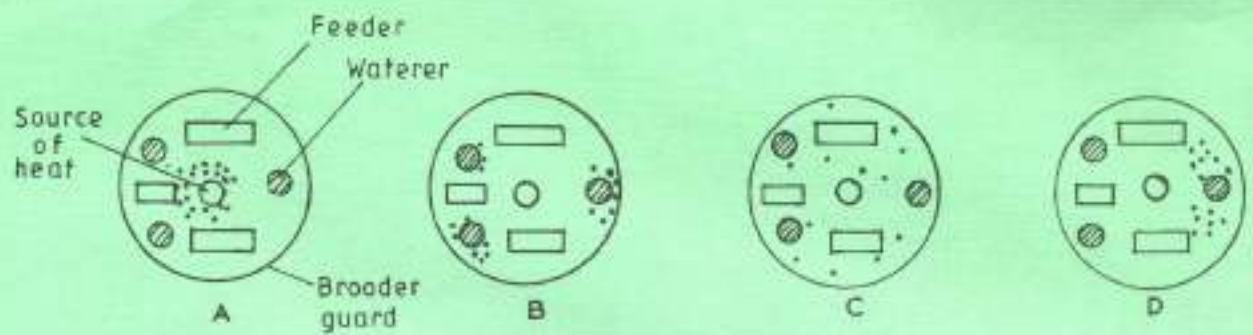


Fig. 2

Identify the conditions of the brooder illustrated by the behaviour of chicks in A, B, C, and D. (4 marks)

(ii) Explain the feeds and feeding during brooding. (6 marks)

8. (a) (i) Describe the life cycle of blowfly. (15 marks)
 (ii) Give any five factors that increase the risk of blowfly attack. (15 marks)
- (b) Highlight any five preventative measures of blowfly attack. (5 marks)

THIS IS THE LAST PRINTED PAGE.

